

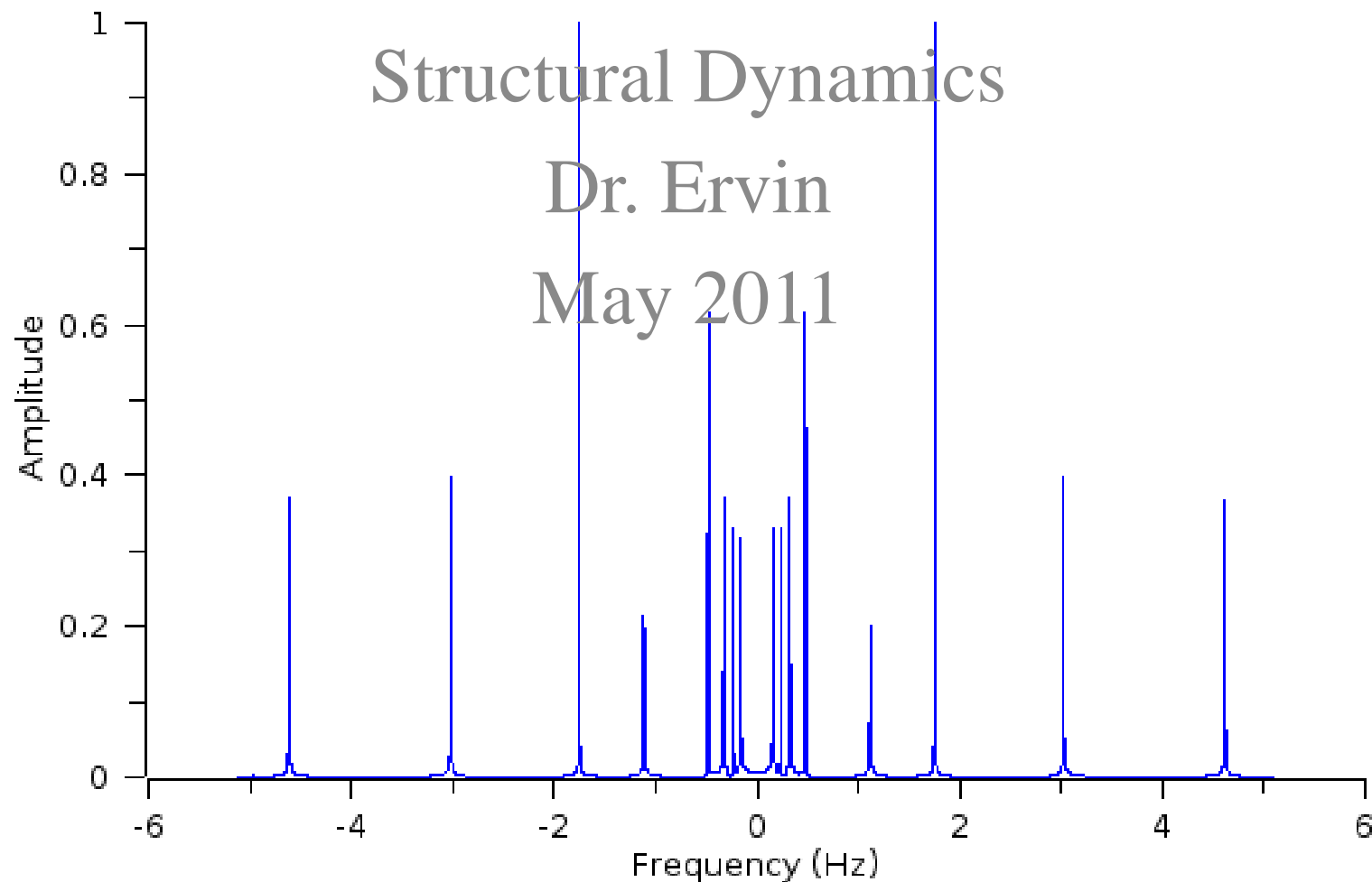
Matlab Code from Lab-View to StarModal

Amir Rahmani

Structural Dynamics

Dr. Ervin

May 2011



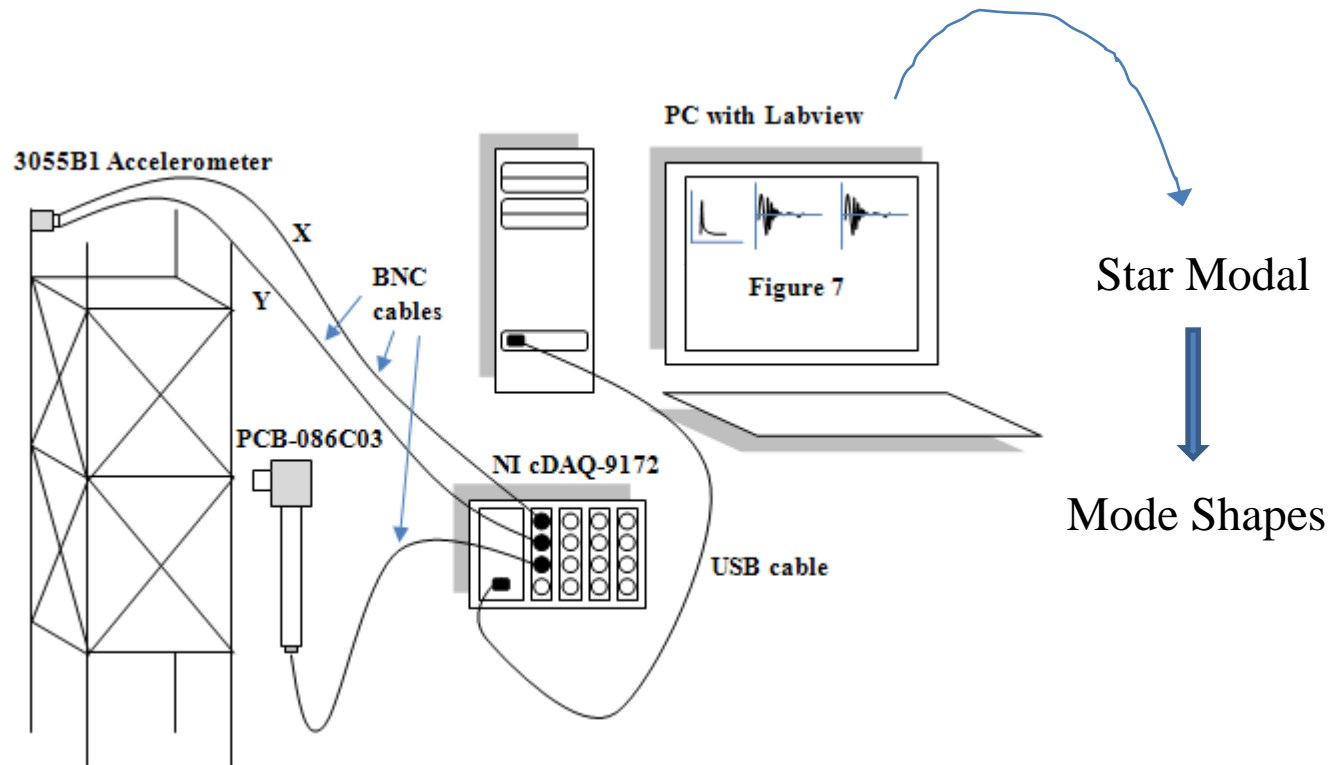
Introduction

Impact test

The structure is excited at several points

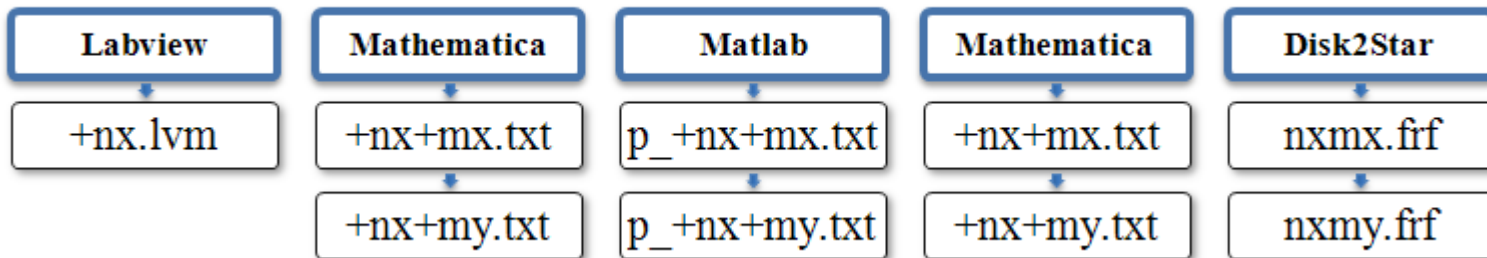
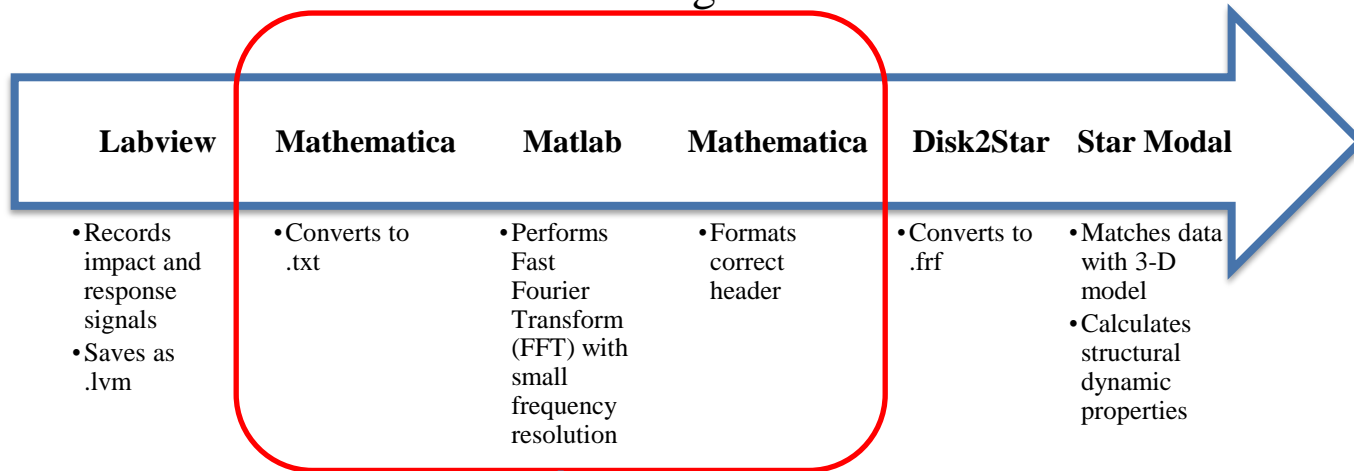
The response of the structure is measured by a sensor

The numbers of hits and measured points are dependent upon structure size, testing time, and **available sensors**.



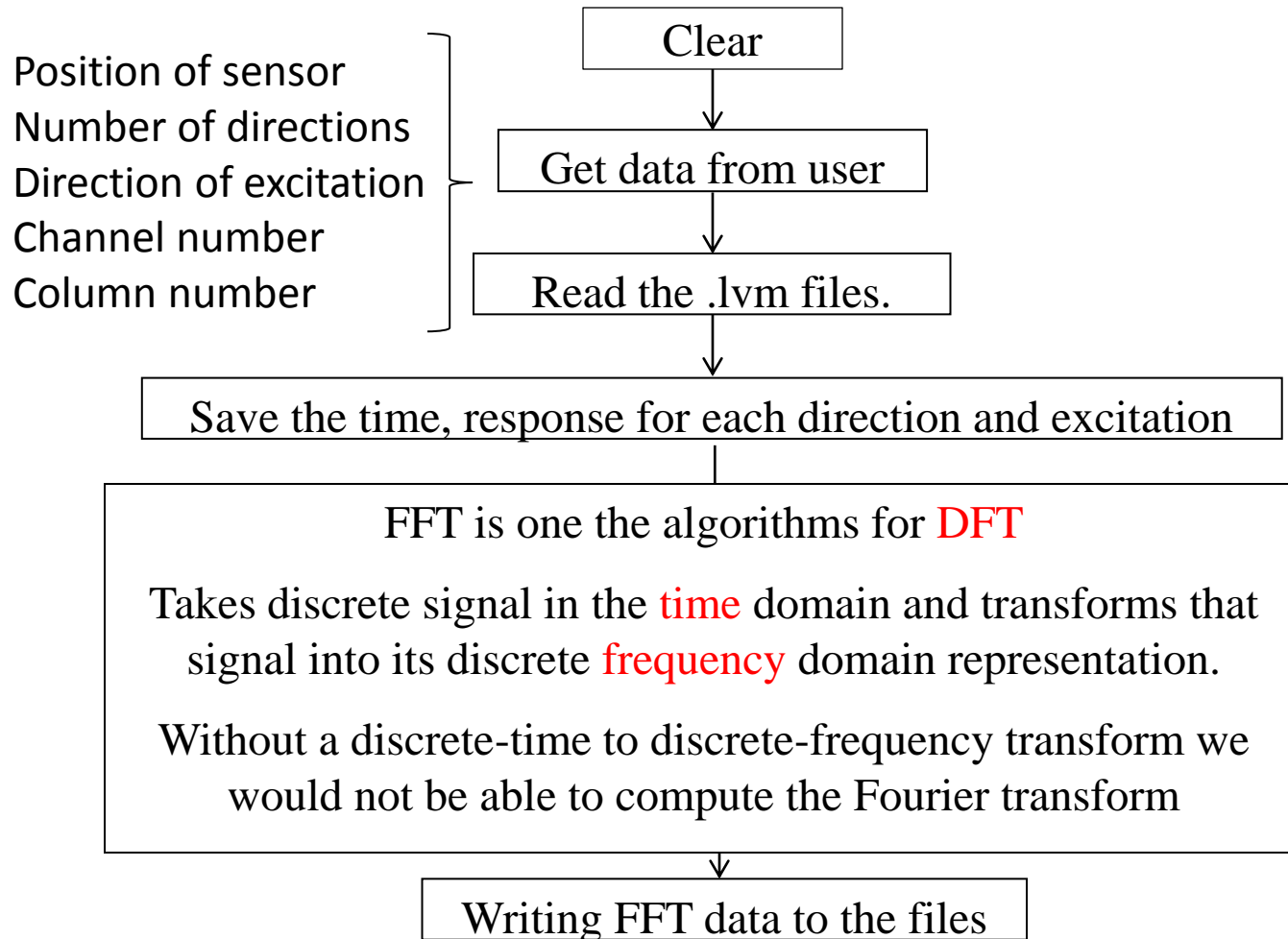
Motivations:

Data Processing

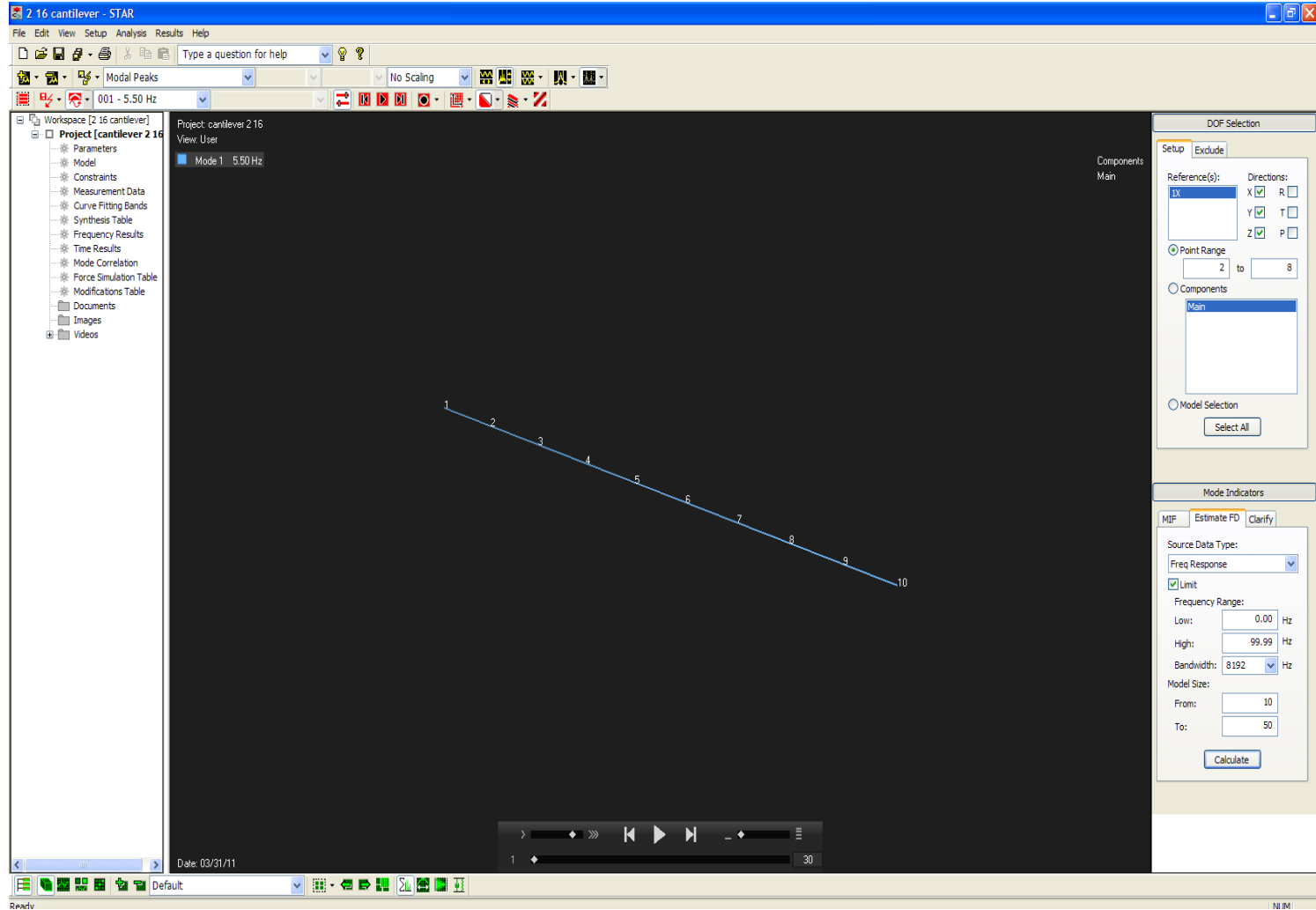


Inefficient

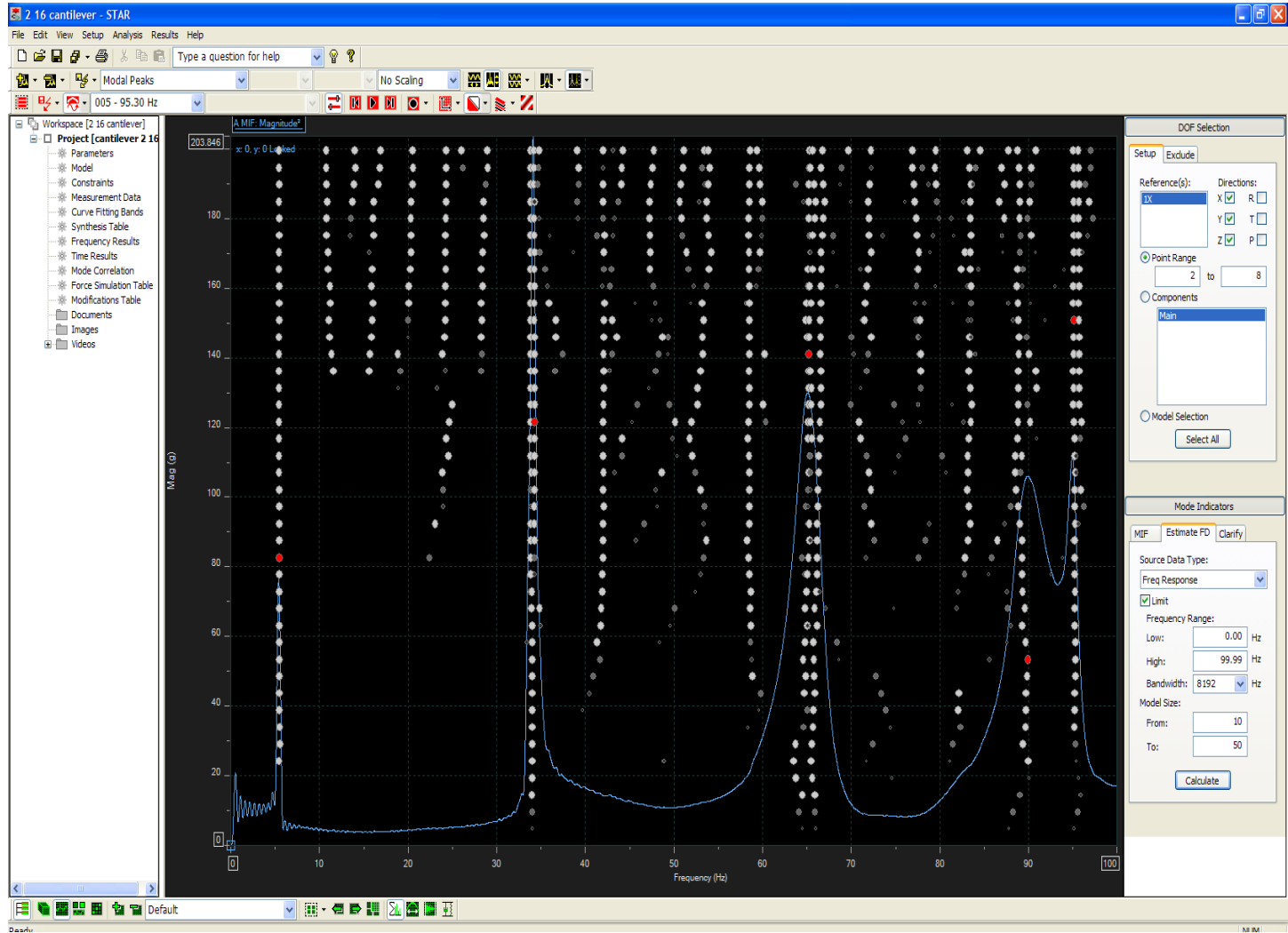
Flowchart:



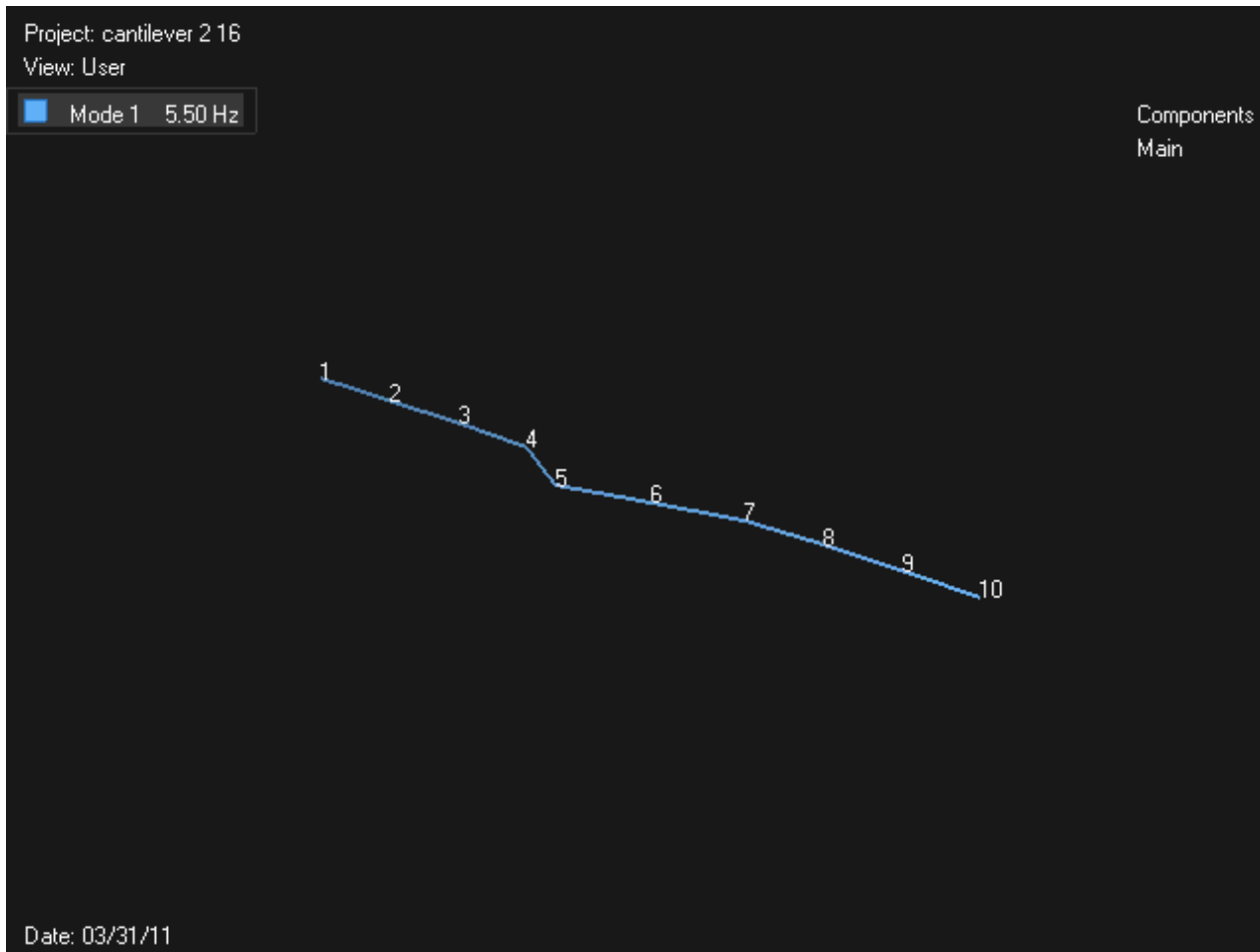
Model in Star Modal:



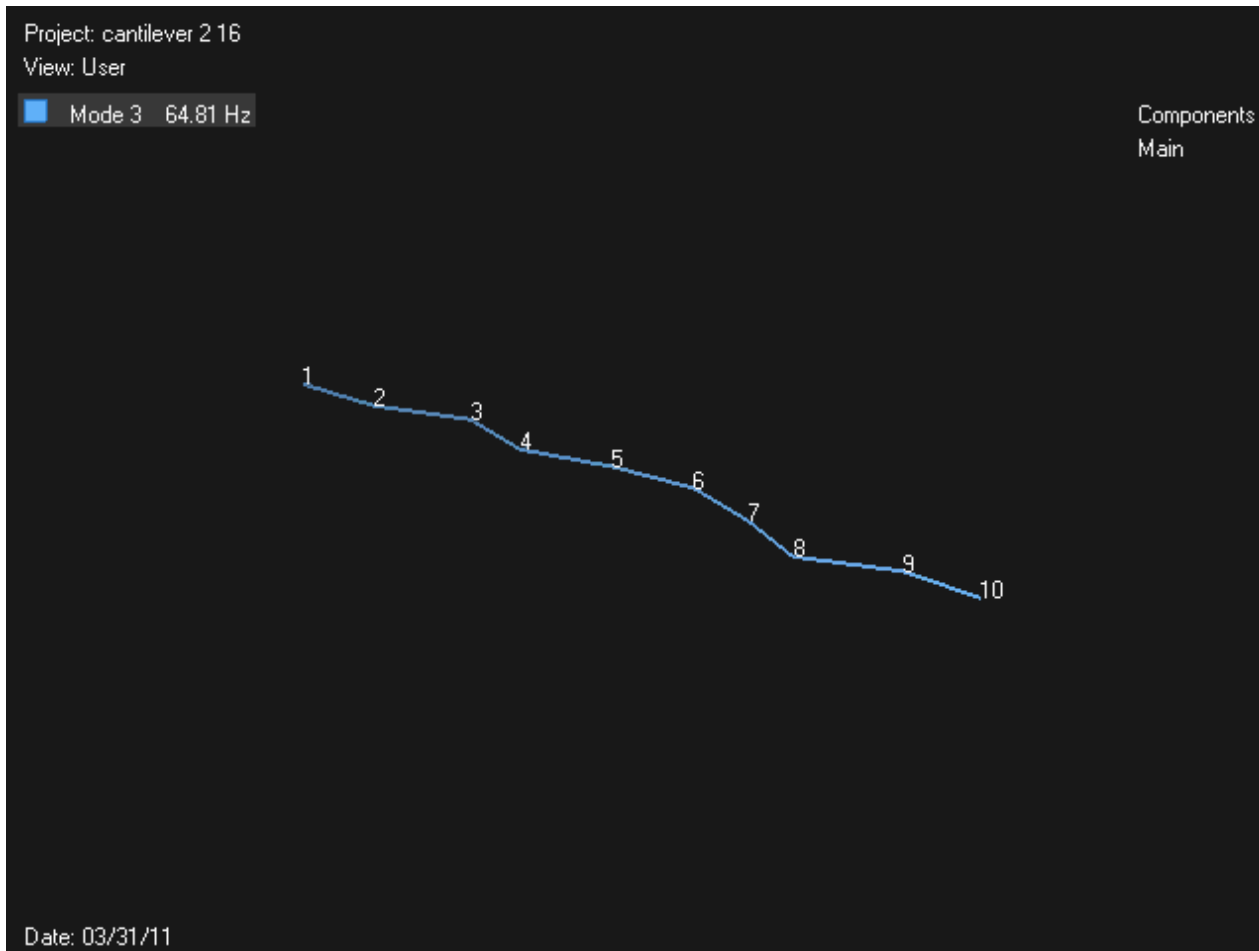
Choosing Peaks:



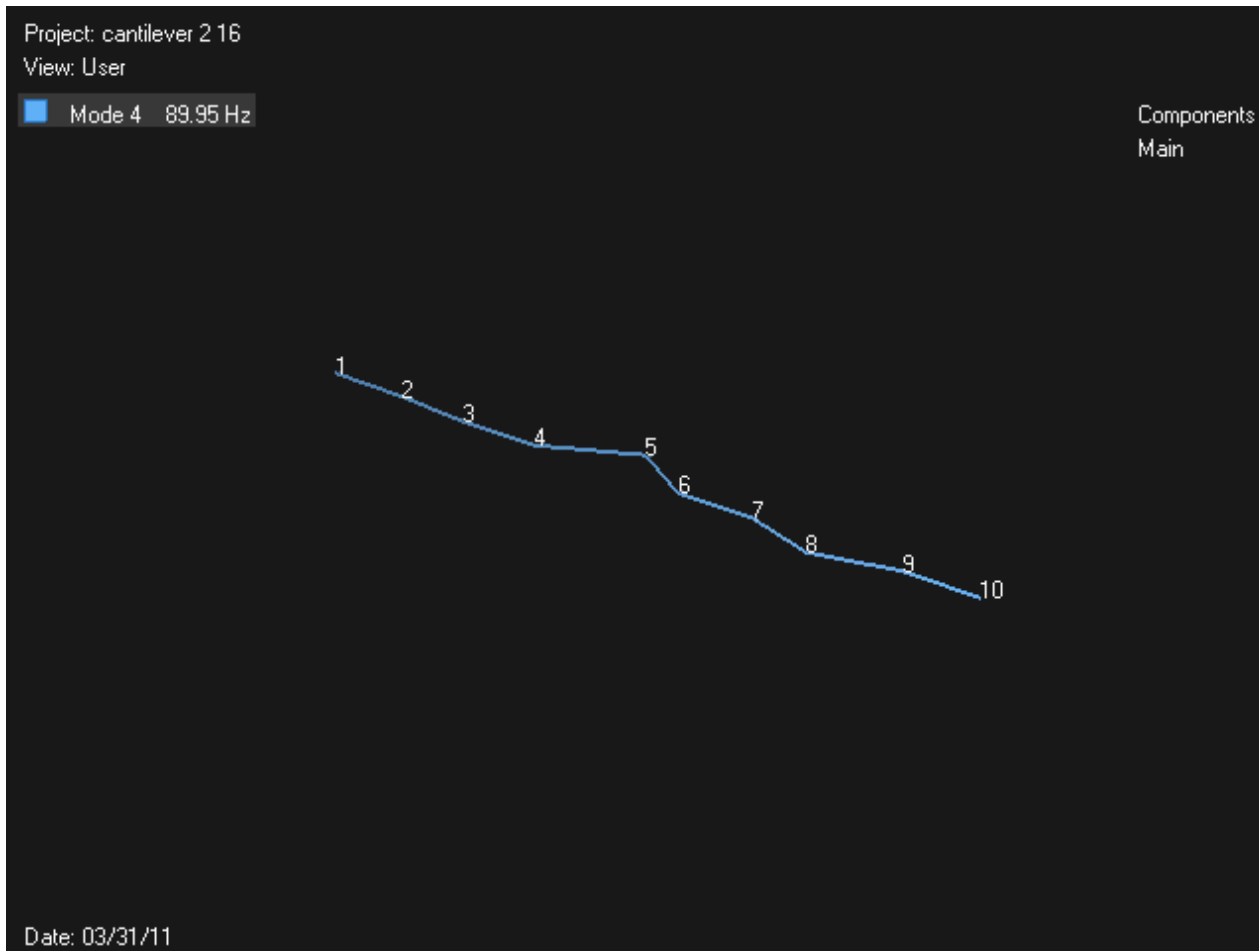
Mode 1 & 2



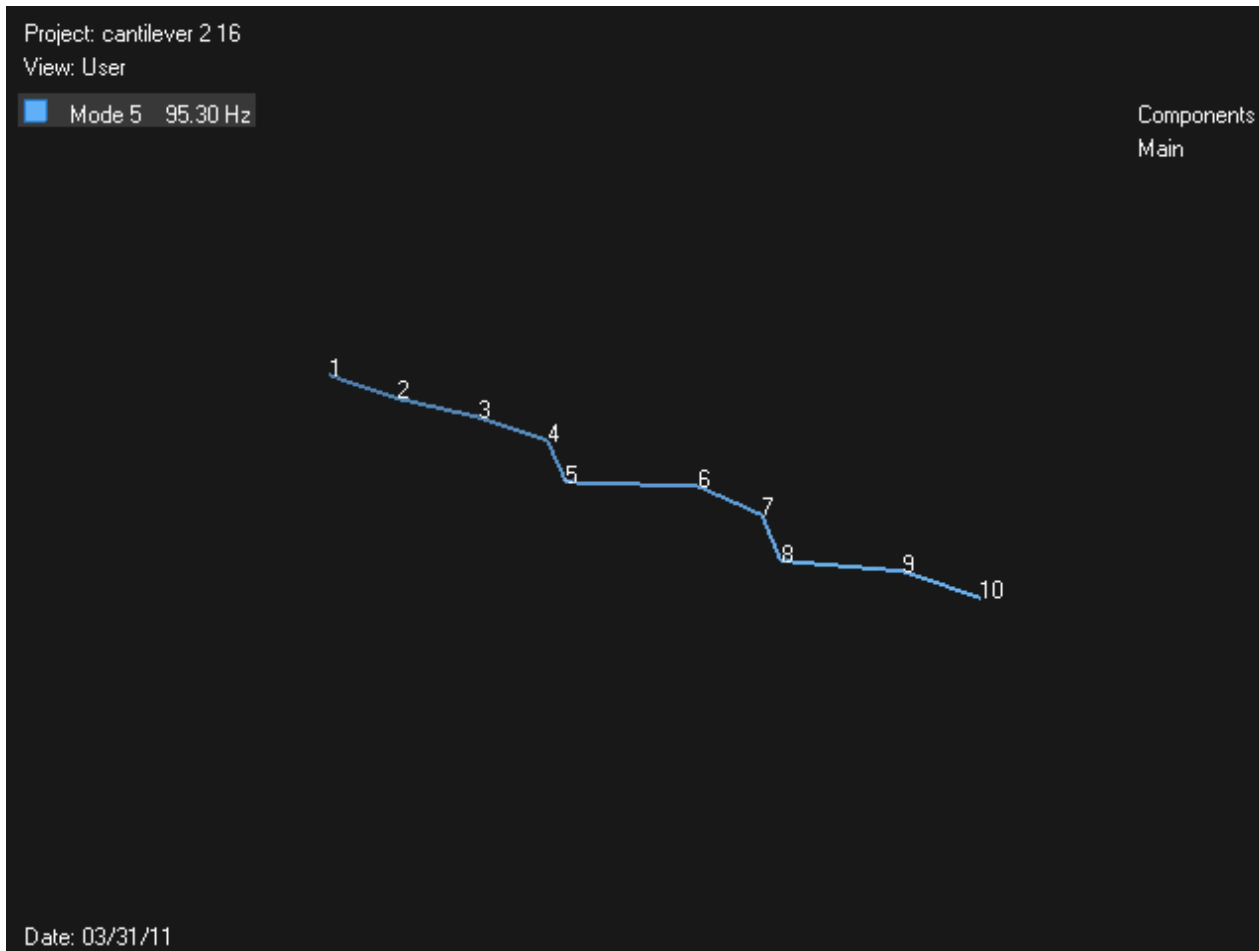
Mode 3



Mode 4



Mode 5



Thank You